

# THERMA-FLUSH 138

-SECTION THRU DOOR-

SHEET \_\_\_\_\_ OF \_\_\_\_\_ DATE \_\_\_\_\_

JOB \_\_\_\_\_

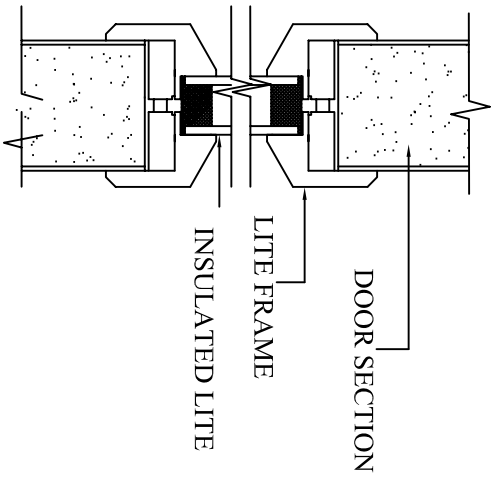
CONTRACTOR \_\_\_\_\_

ARCHITECT \_\_\_\_\_

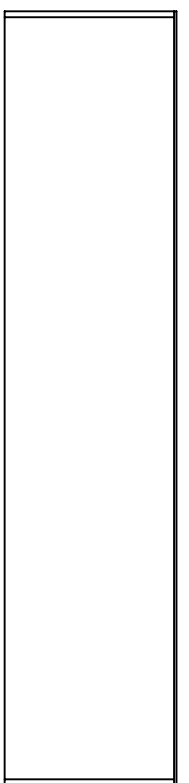
DISTRIBUTOR \_\_\_\_\_

REV. #: 2 **Controlled** DWG. NO. 4121-1004  
SCALE - NONE DRAWN BY: AMH

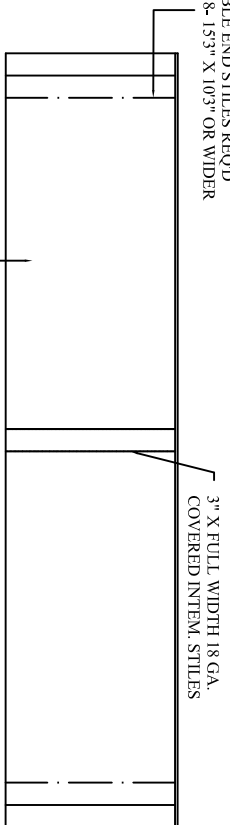
- GLAZING DETAIL -



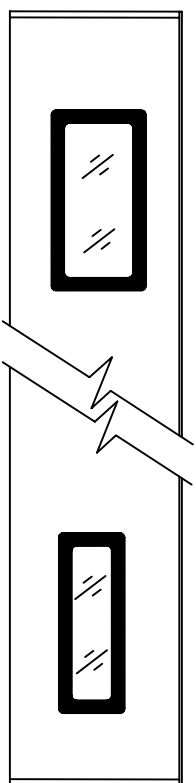
- EXTERIOR SECTION ELEVATION -



- INTERIOR SECTION ELEVATION -



- 24" X 12" or 24" X 8" LITES -  
Will be IG with Black PVC frames.

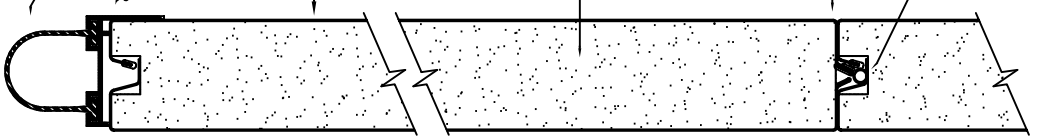


DUAL DUROMETER  
PVC THERMAL  
BREAK  
TONGUE AND  
GROOVE SEAL

1-3/8" POLYSTYRENE  
CORE

26 GA. STEEL SKIN

SINGLE CONTACT  
BOTTOM WEATHER  
SEAL



DOOR Qty.	WIDTH	HEIGHT	COLOR (WHT, BRN, ALM, SAN, ETT) (SEP, GRN, BGE, K, WHT)	END STILE TYPE	# of SECT.	# of PANELS	# of WINDOWS	WINDOW SIZE	WINDOW PLACEMENT	LOCK (key lock or slide lock)
A										
B										
C										

DWG is not all inclusive.  
Designed to be accompanied by Arch. Specs and Track Dwg.