

# THERMA-FLUSH II

SHEET \_\_\_\_\_ OF \_\_\_\_\_ DATE \_\_\_\_\_

JOB \_\_\_\_\_

CONTRACTOR \_\_\_\_\_

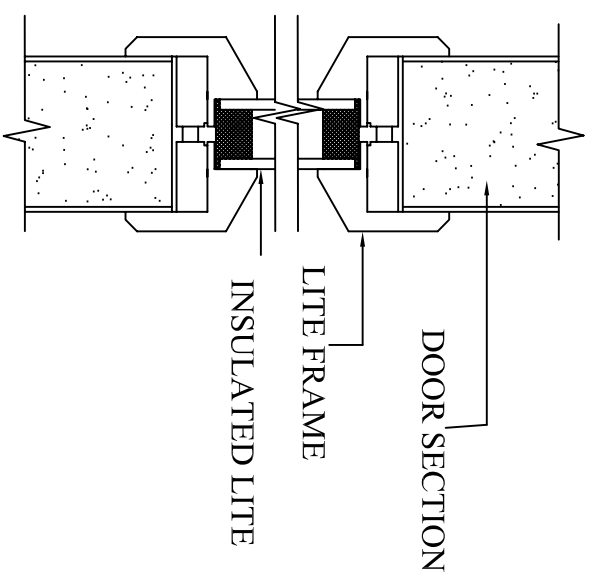
ARCHITECT \_\_\_\_\_

DISTRIBUTOR \_\_\_\_\_

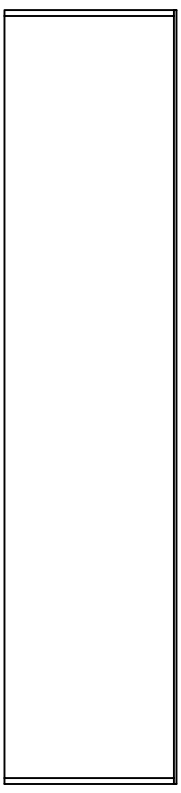
REV. #: 2 Controlled DWG. NO. 4121-1008

SCALE - NONE DRAWN BY: MWH

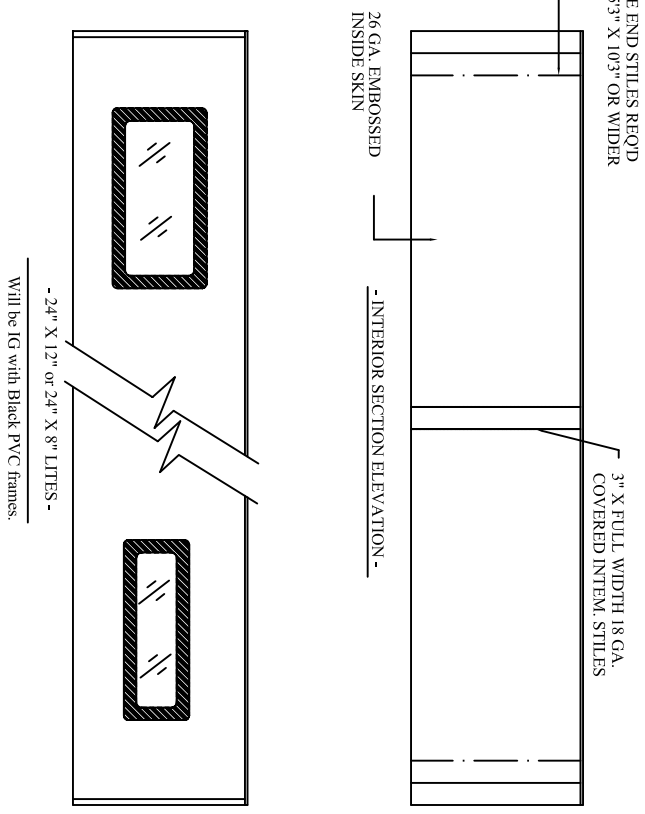
## - GLAZING DETAIL -



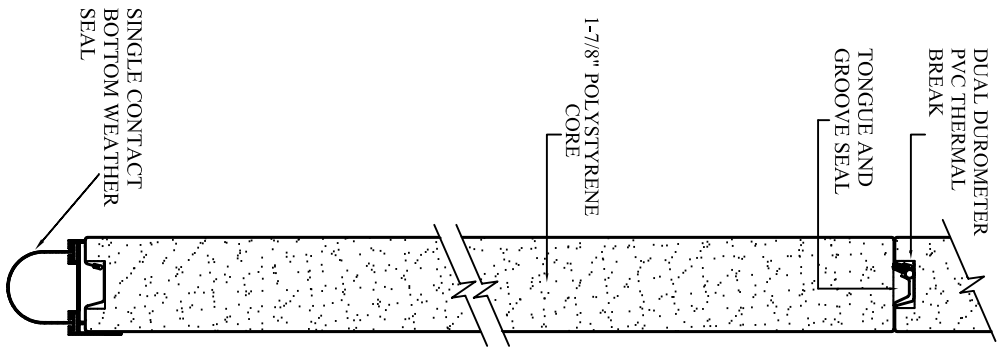
## - EXTERIOR SECTION ELEVATION -



## - INTERIOR SECTION ELEVATION -



## - SECTION THRU DOOR -



DOOR QTY.	WIDTH	HEIGHT	COLOR (WHT, BRN, ALM, SAN, ETT) (SEP, GRN, BGE, K, WHT)	END STILE TYPE	# of SECT.	# of PANELS	# of WINDOWS	WINDOW SIZE	WINDOW PLACEMENT	LOCK (key or slide lock optional)
A										
B										
C										

Note: Doors > 24" wide available in White & K. White only.  
DWG is not all inclusive.  
Designed to be accompanied by Arch. Specs and Track Dwg.