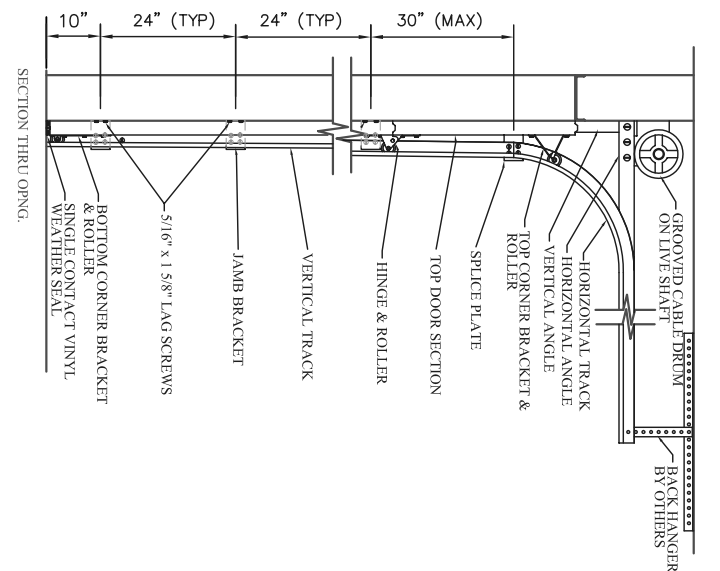
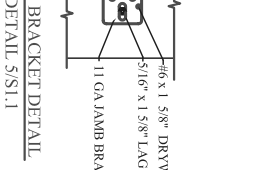
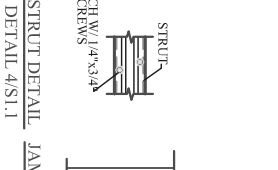
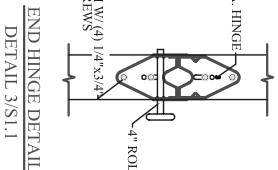
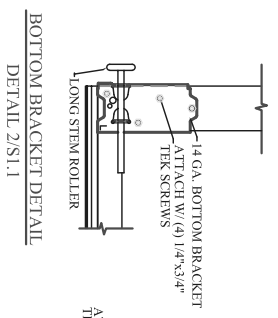
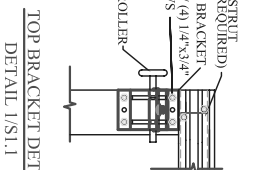
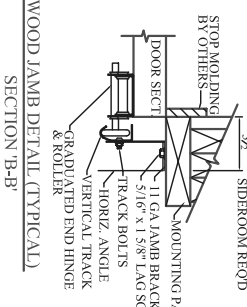
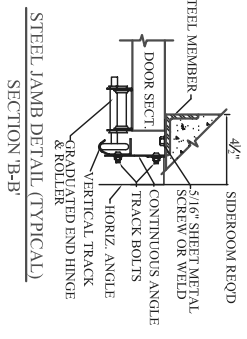


D	# OF STRUTS
6' to 8'	3 STRUTS
8'3" to 12'	4 STRUTS
12'3" to 16'	5 STRUTS
16'3" to 18'	6 STRUTS
18'3" to 20'	7 STRUTS

PLACE ONE STRUT ON TOP SECTION, PLACE ONE STRUT ON BOTTOM SECTION, SPACING BETWEEN TOP AND BOTTOM STRUTS DO NOT EXCEED A SPACING OF 48"



- NOTES:**
- * DOORS & HARDWARE WILL BE DESIGNED & MANUFACTURED & INSTALLED ACCORDING TO D.O.S.M.A.S.
 - * IN DOOR SECTIONS WHERE WINDOW LITES ARE INSTALLED, STRUTS MAY BE RELOCATED OVER HINGE LEAVES TO AVOID OBSTRUCTION.
 - * AN INSIDE SLIDE LOCK SHOULD BE MOUNTED ON END STILE APPROXIMATELY 3" FROM BOTTOM OF DOOR ON THE INTERIOR LEFT.



MODEL: RS-25
 DESIGN PRESSURE: +12.8/4.4.8 PSF
 TEST PRESSURE: +19.2/22.2 PSF
 TESTED PER THE APPLICABLE REQUIREMENTS OF:
 ASTM: E-330 ANSIDASMA 108-2002

NOTE: THE DESIGN OF SUPPORTING STRUCTURAL ELEMENTS SHALL BE THE RESPONSIBILITY OF THE PROFESSIONAL OF RECORD FOR THE BUILDING OR STRUCTURE IN ACCORDANCE WITH CURRENT BUILDING CODES

northcentral
 ROOR COMPANY
 60901
ENGINEERING DRAWING

TITLE
 10' 2" MAX WIDTH, WINDLOAD RATED DOOR

MODEL # RS-25, 24 & 25 gauge
SCALE - N/A

REV. NO. 3
SHEET OF