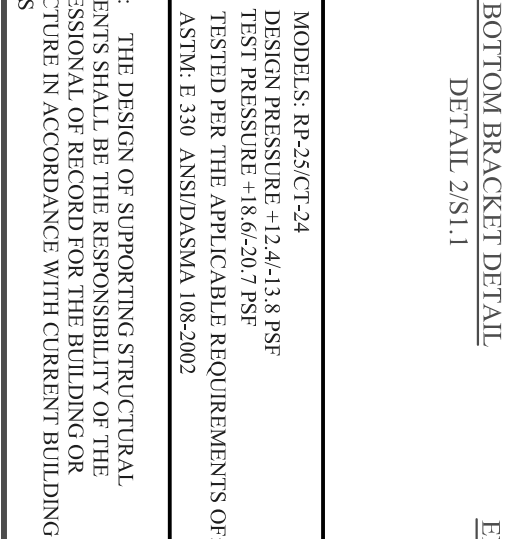
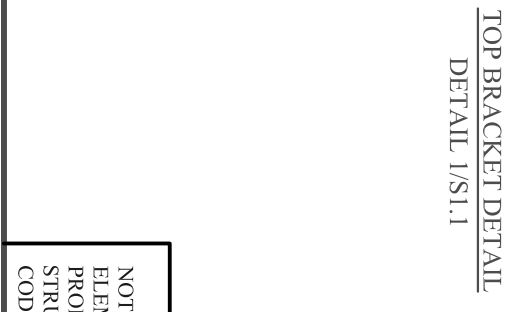
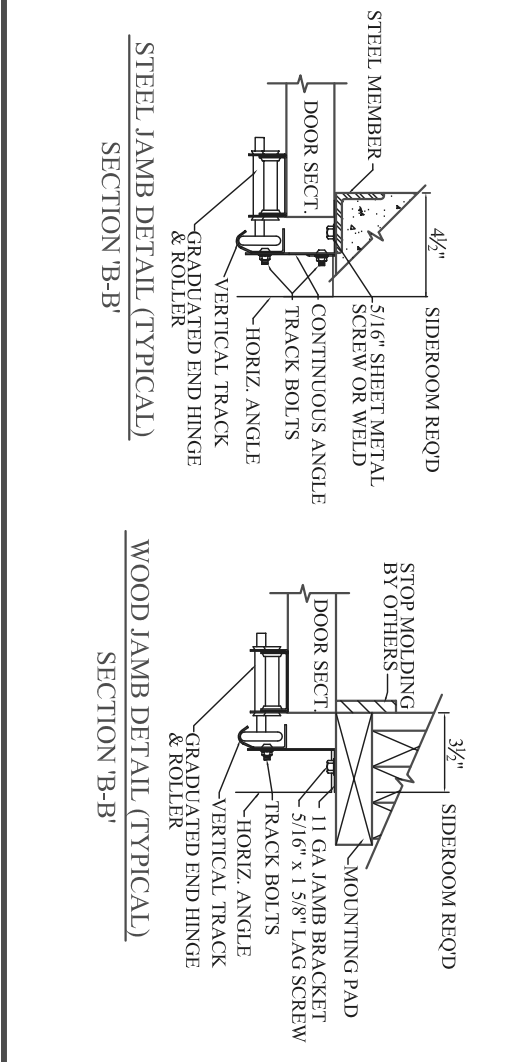
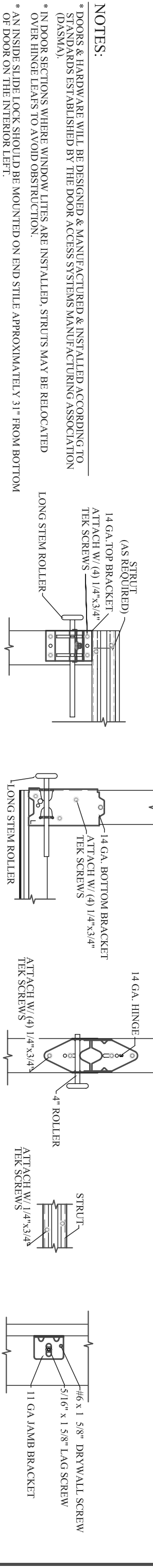
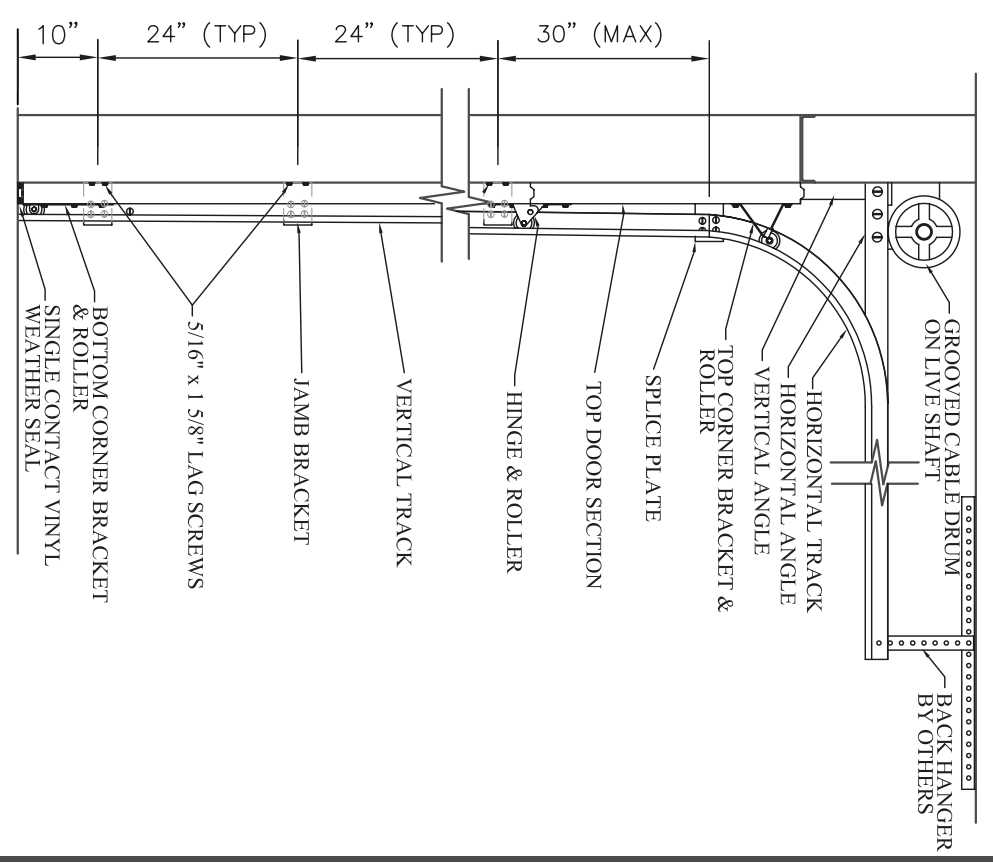


D	# OF STRUTS	PLACE ONE STRUT ON TOP SECTION, PLACE TWO STRUTS ON BOTTOM SECTION, PLACE ADDITIONAL STRUTS EVENTUALLY SPACED BETWEEN TOP AND BOTTOM STRUTS DO NOT EXCEED A SPACING OF 24"
6' to 6'9"	6 STRUTS	
7' to 8'	7 STRUTS	
8'3" to 9'3"	8 STRUTS	14" to 15"
9'6" to 10'3"	9 STRUTS	15'3" to 16"
10'6" to 11'6"	10 STRUTS	16'3" to 17'3"
11'9" to 12'6"	11 STRUTS	17'6" to 18'6"
12'9" to 13'9"	12 STRUTS	18'9" to 19'3"
		19'6" to 20"



MODEL S: RP-25/CT-24
 DESIGN PRESSURE +12.4/-13.8 PSF
 TEST PRESSURE +18.6/-20.7 PSF
 TESTED PER THE APPLICABLE REQUIREMENTS OF:
 ASTM: E 330 ANSID/DASMA 108-2002

northcentral
 DOOR COMPANY
 BEMIDJ, MN 56601

ENGINEERING DRAWING

18'2" MAX. WIDTH, WINDLOAD RATED DOOR

TITLE: **18'2" MAX. WIDTH, WINDLOAD RATED DOOR**

MODEL # **RP-25/AR-25/CT-24**

SCALE - **N/A**

REV. NO. **3** OF **3**

SHEET **3** OF **3**

DATE _____