

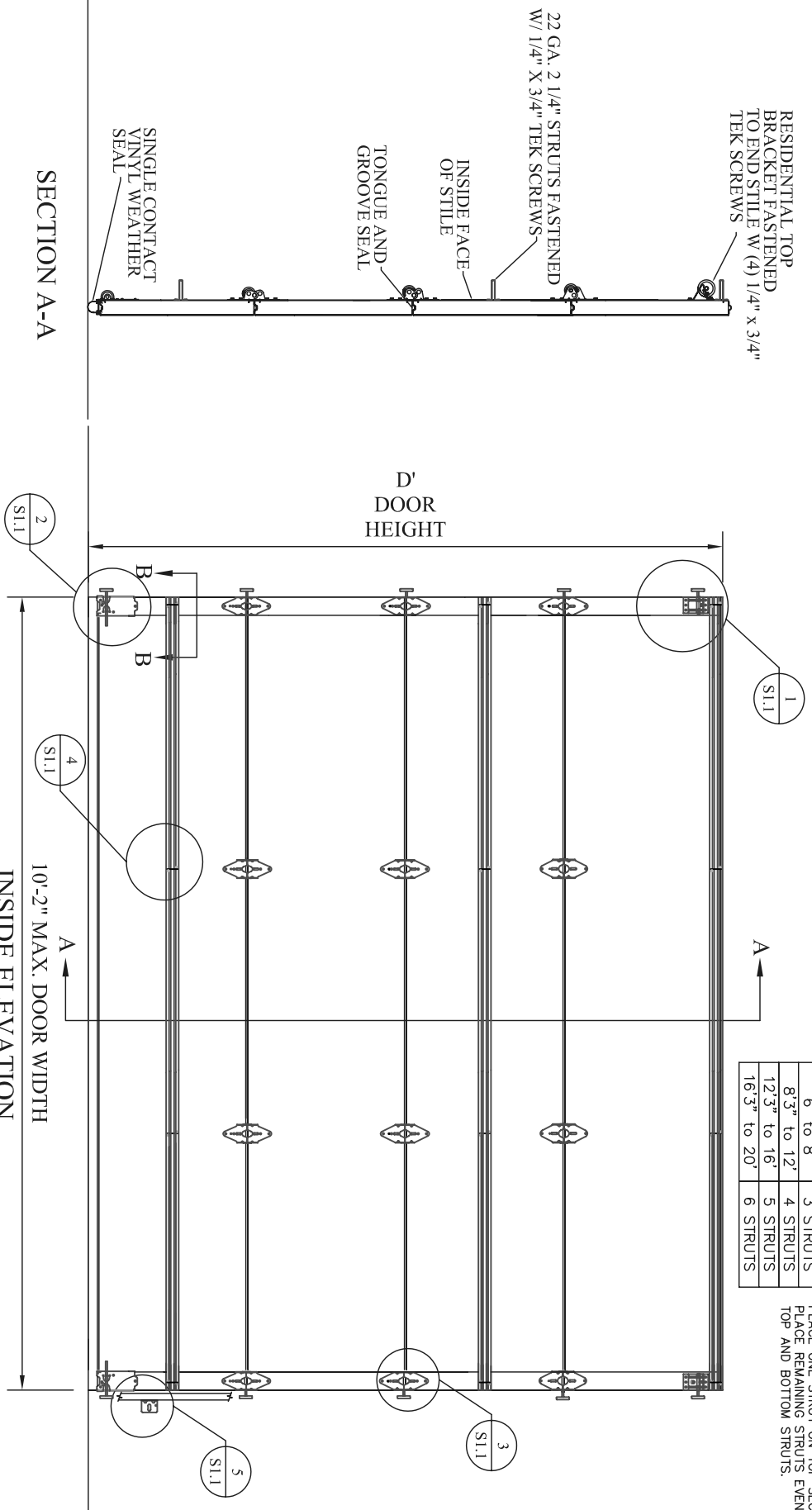
RESIDENTIAL TOP BRACKET FASTENED TO END STILE W/ (4) 1/4" x 3/4" TEK SCREWS

22 GA. 2 1/4" STRUTS FASTENED W/ 1/4" X 3/4" TEK SCREWS

INSIDE FACE OF STILE  
TONGUE AND GROOVE SEAL

SINGLE CONTACT VINYL WEATHER SEAL

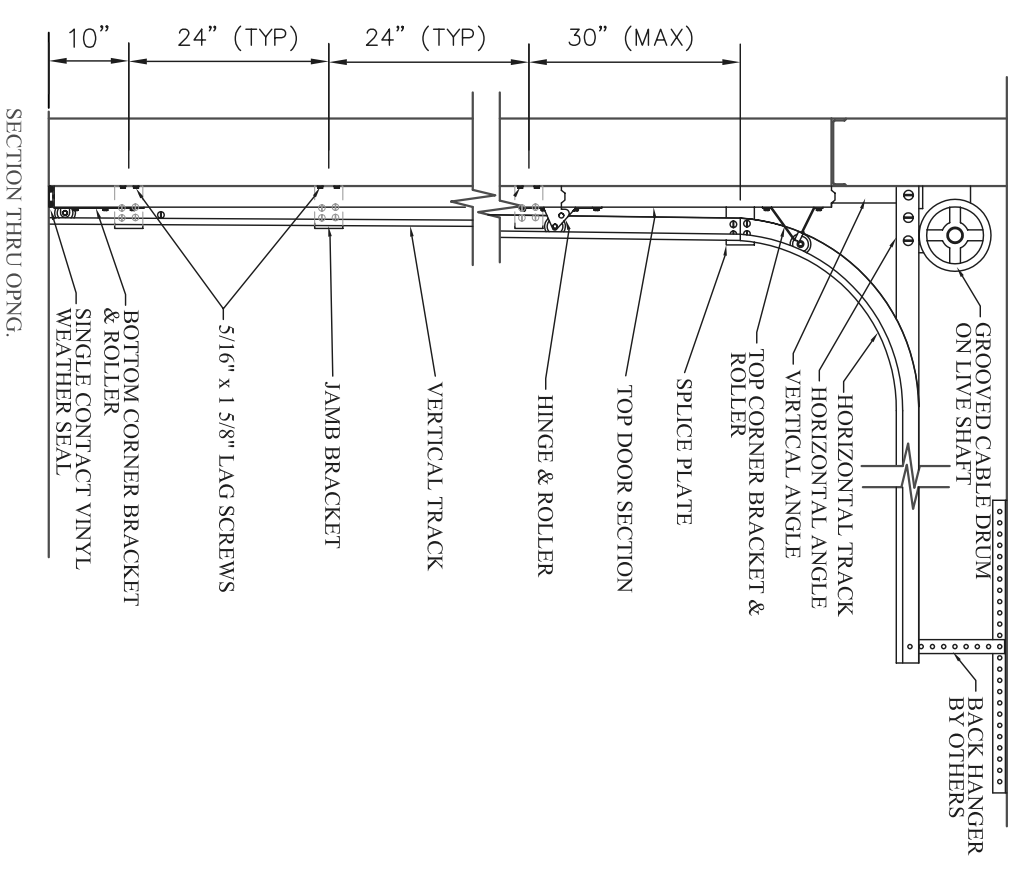
SECTION A-A



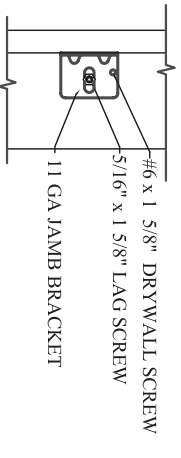
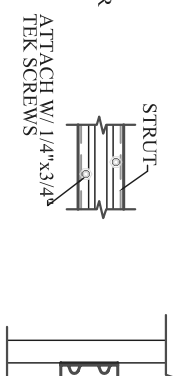
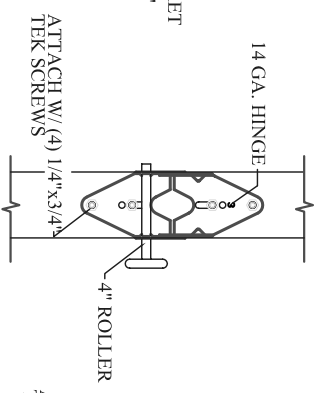
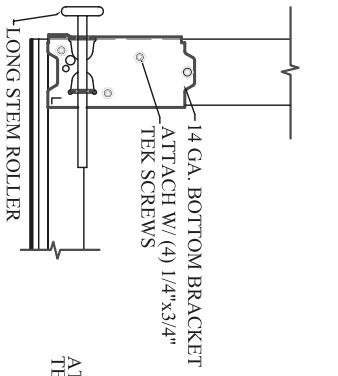
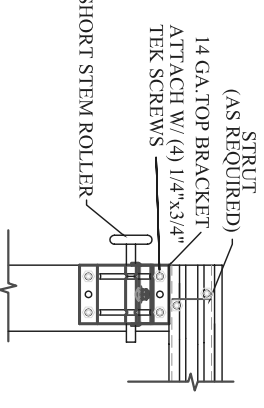
D	# OF STRUTS
6' to 8'	3 STRUTS
8'3\" to 12'	4 STRUTS
12'3\" to 16'	5 STRUTS
16'3\" to 20'	6 STRUTS

PLACE ONE STRUT ON TOP SECTION. PLACE REMAINING STRUTS EVENLY SPACED BETWEEN TOP AND BOTTOM STRUTS.

INSIDE ELEVATION



- NOTES:**
- \* DOORS & HARDWARE WILL BE DESIGNED & MANUFACTURED & INSTALLED ACCORDING TO STANDARDS ESTABLISHED BY THE DOOR ACCESS SYSTEMS MANUFACTURING ASSOCIATION (DASMA).
  - \* IN DOOR SECTIONS WHERE WINDOW LITES ARE INSTALLED, STRUTS MAY BE RELOCATED OVER HINGE LEAFS TO AVOID OBSTRUCTION.
  - \* AN INSIDE SLIDE LOCK SHOULD BE MOUNTED ON END STILE APPROXIMATELY 31" FROM BOTTOM OF DOOR ON THE INTERIOR LEFT.



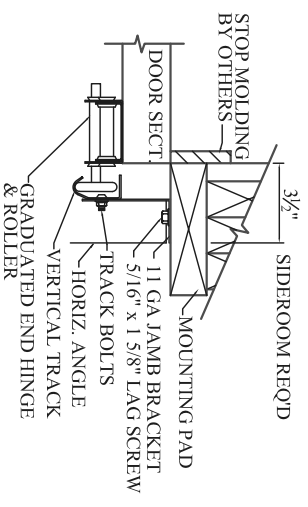
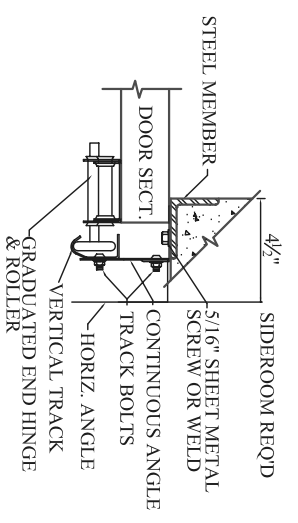
TOP BRACKET DETAIL  
DETAIL 1/S1.1

BOTTOM BRACKET DETAIL  
DETAIL 2/S1.1

END HINGE DETAIL  
DETAIL 3/S1.1

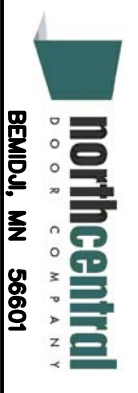
STRUT DETAIL  
DETAIL 4/S1.1

JAMB BRACKET DETAIL  
DETAIL 5/S1.1



MODELS: TR-138, TF-138, TF-2, AR-138, SR SERIES  
DESIGN PRESSURE +12.8/-14.8 PSF  
TEST PRESSURE +19.2/-22.2 PSF  
TESTED PER THE APPLICABLE REQUIREMENTS OF:  
ASTM: E 330 ANSI/DASMA 108-2002

NOTE: THE DESIGN OF SUPPORTING STRUCTURAL ELEMENTS SHALL BE THE RESPONSIBILITY OF THE PROFESSIONAL OF RECORD FOR THE BUILDING OR STRUCTURE IN ACCORDANCE WITH CURRENT BUILDING CODES



BEMIDJI, MN 56601

ENGINEERING DRAWING

<b>TITLE</b>	10' 2" MAX. WIDTH, WIND LOAD RATED DOOR
<b>MODEL #</b>	SPECIAL RESERVE
<b>SCALE</b>	N/A
<b>REV. NO.</b>	3
<b>SHEET</b>	OF
<b>DATE</b>	