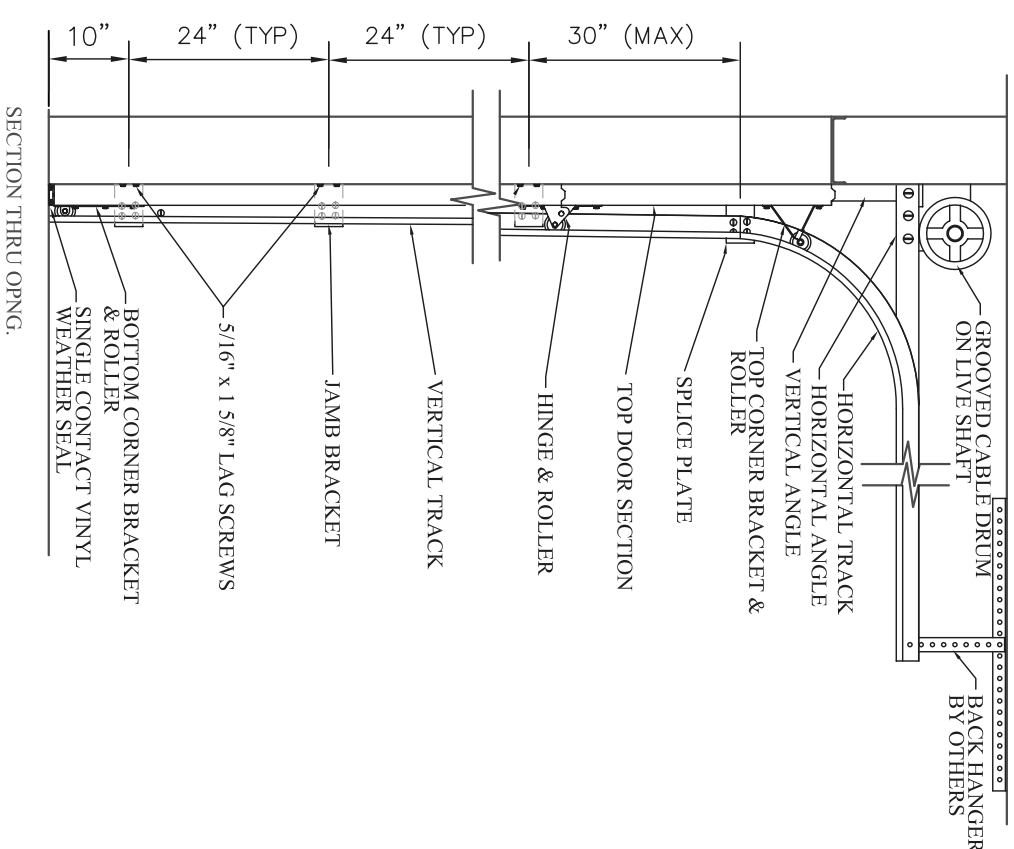
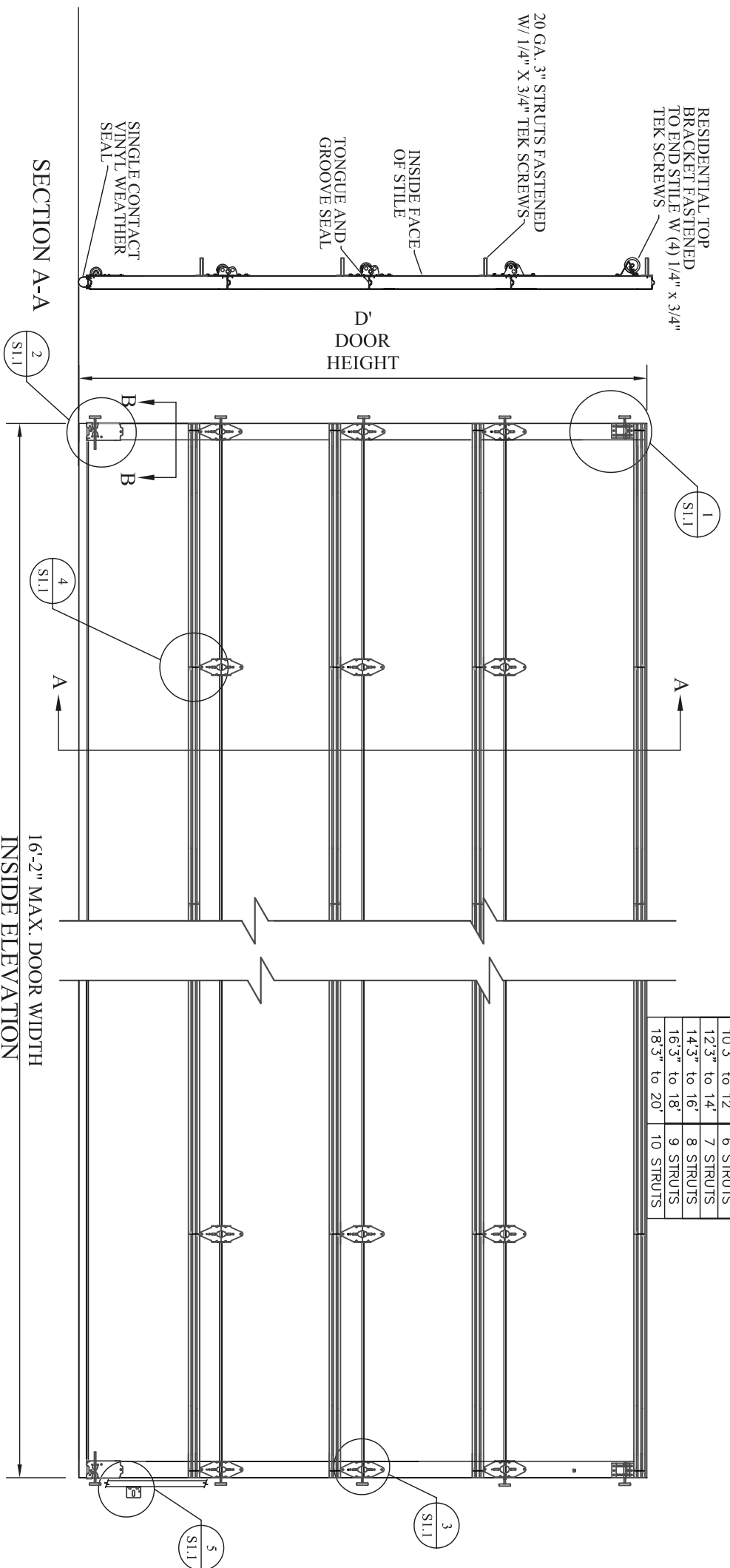


D	# OF STRUTS
6' to 8'	4 STRUTS
8'3" to 10'	5 STRUTS
10'3" to 12'	6 STRUTS
12'3" to 14'	7 STRUTS
14'3" to 16'	8 STRUTS
16'3" to 18'	9 STRUTS
18'3" to 20'	10 STRUTS

PLACE ONE STRUT ON EVERY SECTION

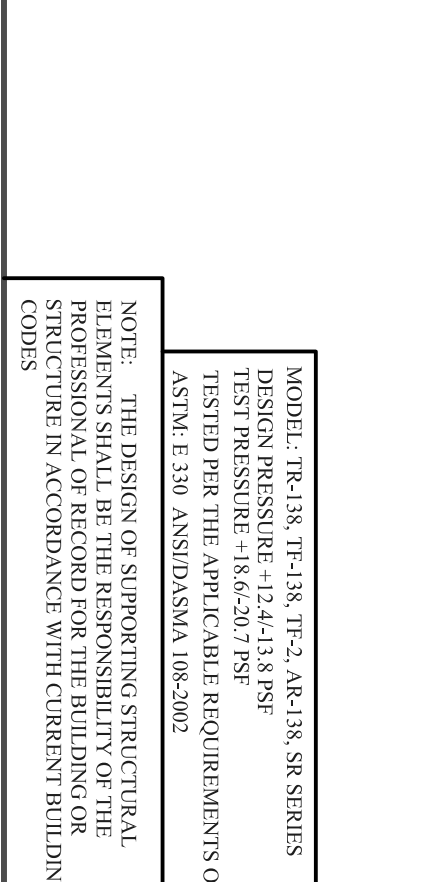
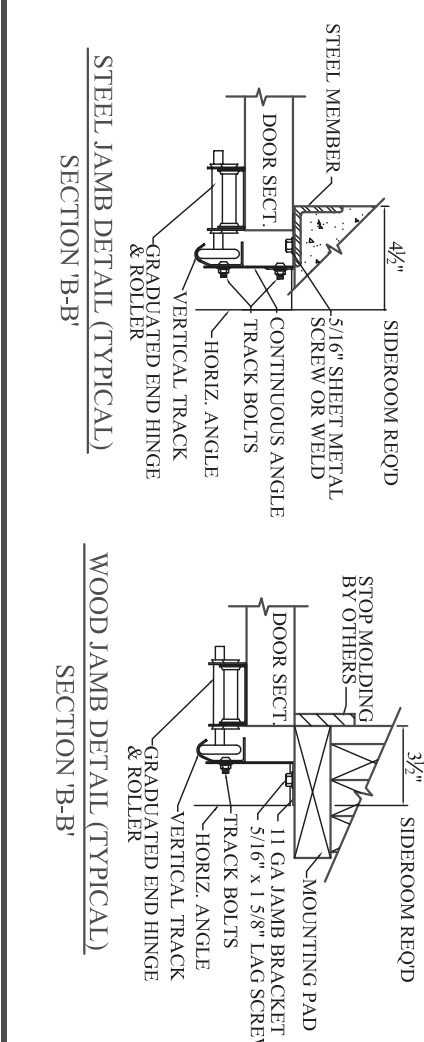
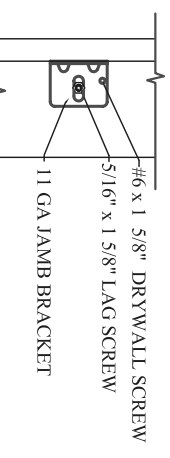
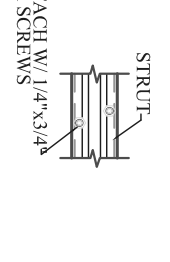
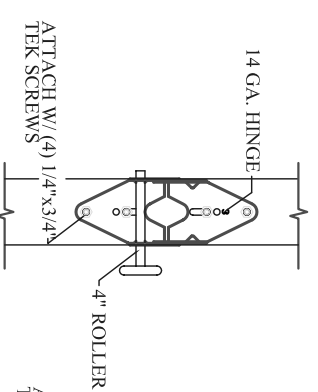
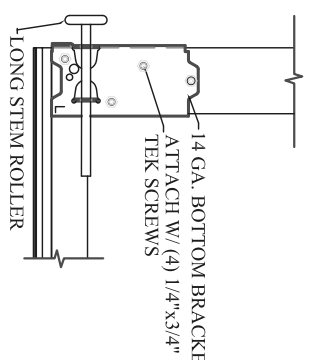
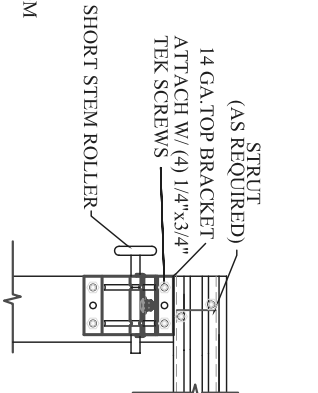


NOTES:

* DOORS & HARDWARE WILL BE DESIGNED & MANUFACTURED & INSTALLED ACCORDING TO STANDARDS ESTABLISHED BY THE DOOR ACCESS SYSTEMS MANUFACTURING ASSOCIATION (DASMA).

* IN DOOR SECTIONS WHERE WINDOW LITES ARE INSTALLED, STRUTS MAY BE RELOCATED OVER HINGE LEAVES TO AVOID OBSTRUCTION.

* AN INSIDE SLIDE LOCK SHOULD BE MOUNTED ON END STILE APPROXIMATELY 31" FROM BOTTOM OF DOOR ON THE INTERIOR LEFT.



northcentral
DOOR COMPANY
BEMIDJ, MN 56601

ENGINEERING DRAWING

TITLE
16'-2" MAX. WIDTH, WIND LOAD RATED DOOR

MODEL # SPECIAL RESERVE
SCALE - N/A

REV. NO. 3
SHEET _____ **OF** _____
DATE _____

NOTE: THE DESIGN OF SUPPORTING STRUCTURAL ELEMENTS SHALL BE THE RESPONSIBILITY OF THE PROFESSIONAL OF RECORD FOR THE BUILDING OR STRUCTURE IN ACCORDANCE WITH CURRENT BUILDING CODES

MODEL: TR-138, TF-138, TF-2, AR-138, SR SERIES
DESIGN PRESSURE +12.4/-13.8 PSF
TEST PRESSURE +18.6/-20.7 PSF
TESTED PER THE APPLICABLE REQUIREMENTS OF:
ASTM: E 330 ANSID/DASMA 108-2002