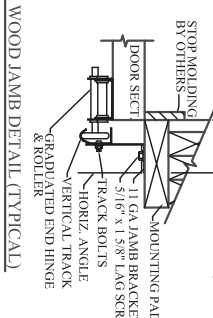
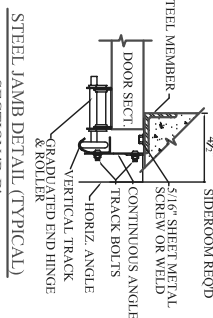
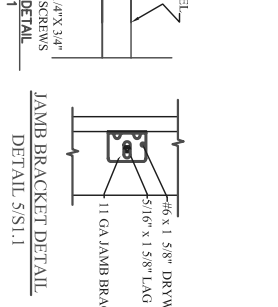
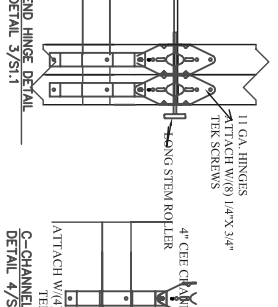
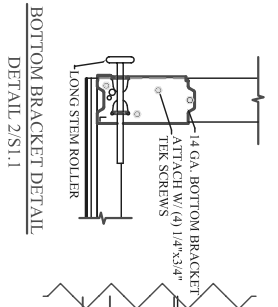
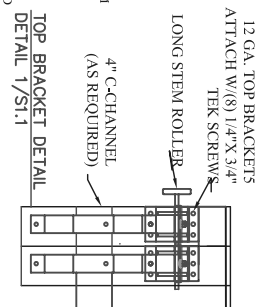
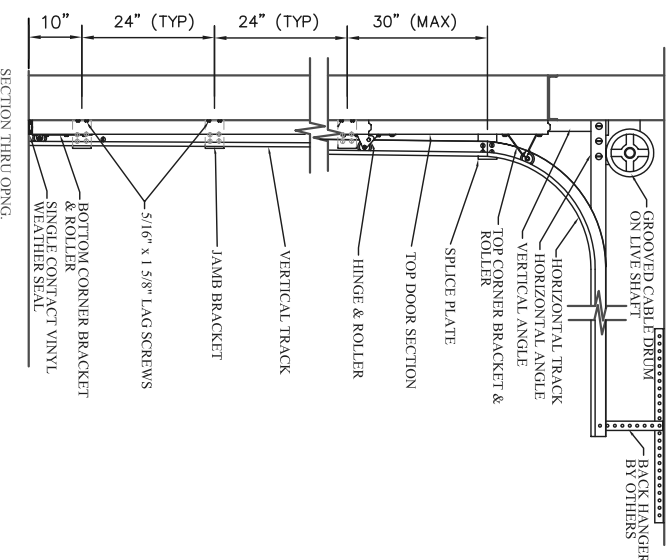


D	# OF STRUTS
6'	3 C-CHANNEL
7' to 8'	4 C-CHANNEL
8'3" to 10'	5 C-CHANNEL
10'3" to 12'	6 C-CHANNEL
12'3" to 14'	7 C-CHANNEL
14'3" to 16'	8 C-CHANNEL
16'3" to 18'	9 C-CHANNEL
18'3" to 20'	10 C-CHANNEL

PLACE ONE 4" C-CHANNEL ON EVERY SECTION



NOTES:

- * DOORS & HARDWARE WILL BE DESIGNED & MANUFACTURED & INSTALLED ACCORDING TO STANDARDS ESTABLISHED BY THE DOOR ACCESS SYSTEMS MANUFACTURING ASSOCIATION (DASMA).
- * IN DOOR SECTIONS WHERE WINDOW LITES ARE INSTALLED, STRUTS MAY BE RELOCATED OVER HINGE LEANS TO AVOID OBSTRUCTION.
- * AN INSIDE SLIDE LOCK SHOULD BE MOUNTED ON END STILE APPROXIMATELY 31" FROM BOTTOM OF DOOR ON THE INTERIOR LEFT.

MODELS: TMS III
 DESIGN PRESSURE +12.4/-13.8 PSF
 TEST PRESSURE +18.6/-20.7 PSF
 TESTED FOR THE APPLICABLE REQUIREMENTS OF:
 ASTM E 330 ANSI/DASMA 108-2002

northcentral
 PROJECT COMPANY

ENGINEERING DRAWING

TITLE 30'-2" MAX. WIDTH, WIND LOAD RATED DOOR

MODEL # TMS III

SCALE - N/A

REV. NO. 0

SHEET 0

DATE _____