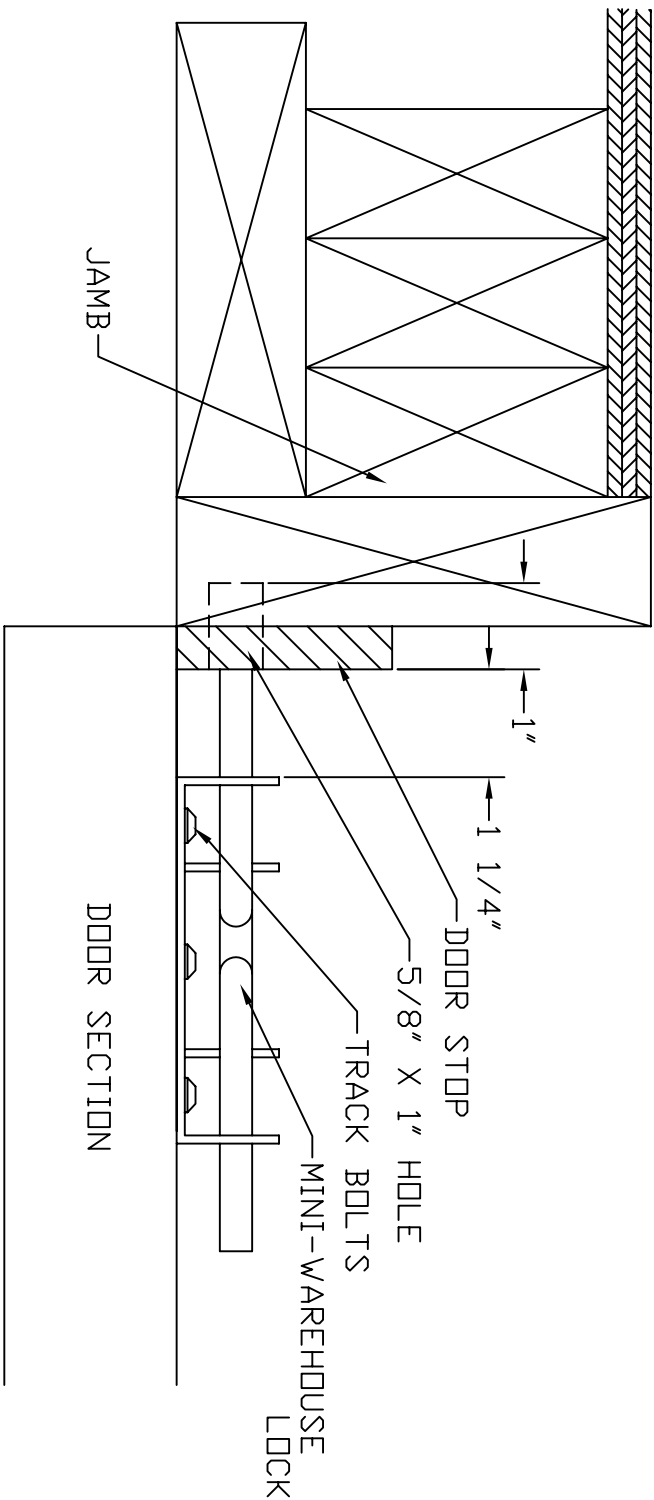


INSTALLATION INSTRUCTIONS FOR MINI-WAREHOUSE LOCK



- THE MINI-WAREHOUSE LOCK CAN BE INSTALLED ON EITHER SIDE OF THE DOOR, THE INSTALLATION IS THE SAME.
1. FASTEN THE LOCK TO A CONVENIENT SPOT ON THE DOOR FACE APPROXIMATELY 1 1/4" FROM THE DOOR STOP WITH FOUR 1/4" X 5/8" TRACK BOLTS AND NUTS. MAKE SURE THE NUTS ARE TO THE INSIDE.
 2. CLOSE THE DOOR TIGHTLY AND MARK THE SPOT WHERE THE LOCK PIN HITS THE JAMB.
 3. DRILL A 5/8" X 1" HOLE CENTERED ON THE MARK YOU JUST MADE.