

Supplemental Instructions for High Lift track

Note: If your door has 20" or less of hi- lift it will have extended verticals (one piece vertical track), follow the standard installation instructions.

- With two piece vertical tracks. The lower vertical track is installed the same as the standard instructions describe. The kicker, or top vertical track, which is a straight piece of track used to carry the door to the horizontal track, is installed on top of the vertical track.

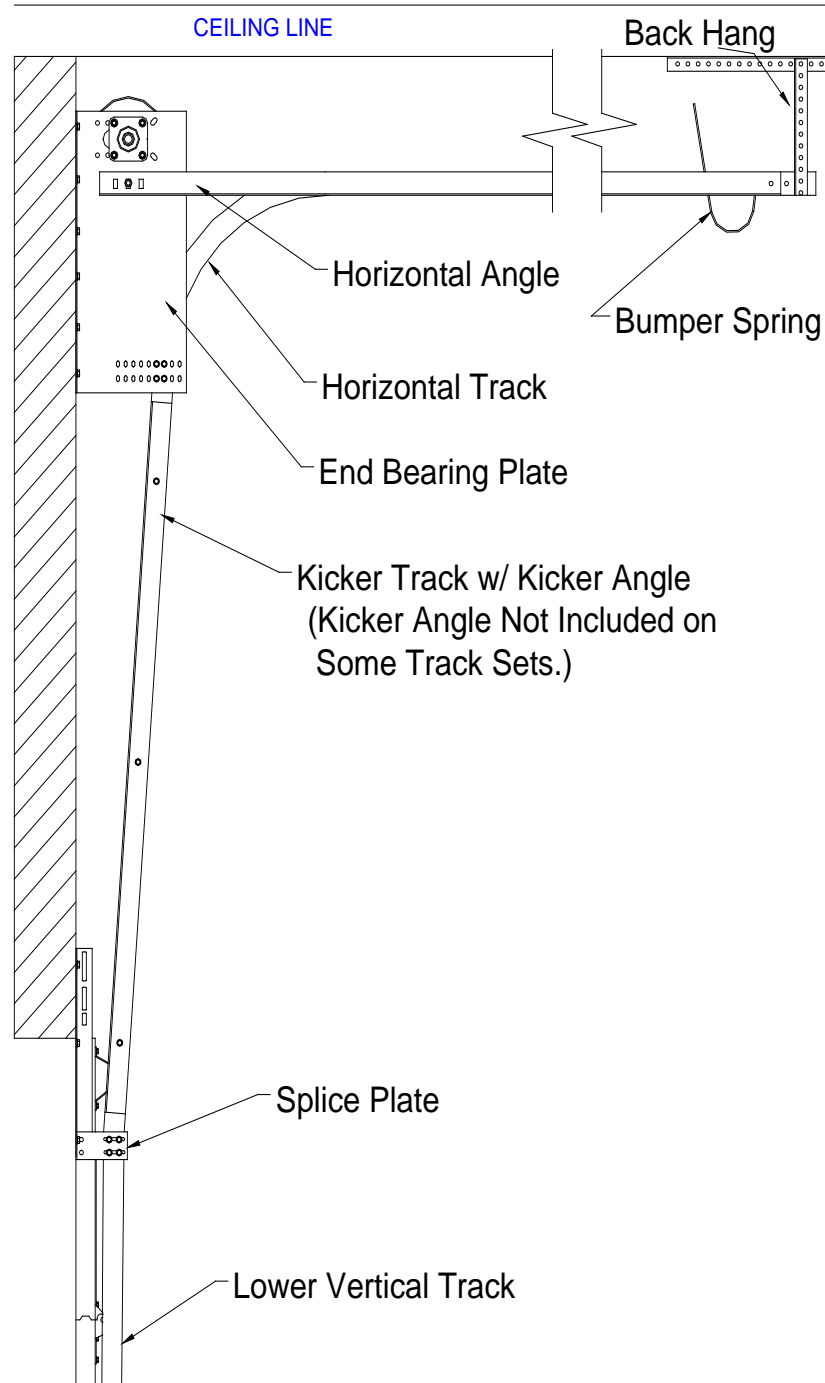
Note: Be sure the lower vertical tracks are straight, level, and plumb with each other before starting your install of your kickers.

- First attach the kicker track to the splice plate at the top of the vertical track, using two ¼" track bolts. Do not tighten the bolts at this time. Lean the kicker track against the wall and the top of the door. Be careful to keep the kicker track from falling.
- Attach the bearing plate, the large plate with the oval hole, to the top of the kicker track, Use two ¼" track bolts to attach the bearing plate to the top of the kicker track. Do not tighten the bolts at this time.
- Anchor the bearing plate to the wall using 6 lag screws or sheet metal screws if you have a steel jamb.

Note: Be sure to use the lower set of holes in the Hi- Lift bearing plate when attaching the kicker track to the bearing plate. The top set of holes is for attaching your horizontal. Before lag bolting the high lift bearing plate be sure the kicker track and bearing plate is straight, level, and plumb, left to right, and not leaning in or away from the edge of the door.

Note: The Hi-lift bearing plate has many holes along the lower edge to give the installer many options on how much pitch the kicker track can have. There is no set rule but the longer the kicker track the more the kicker track should be pitched. Be sure the heads of the track bolts is on the inside of the tracks.

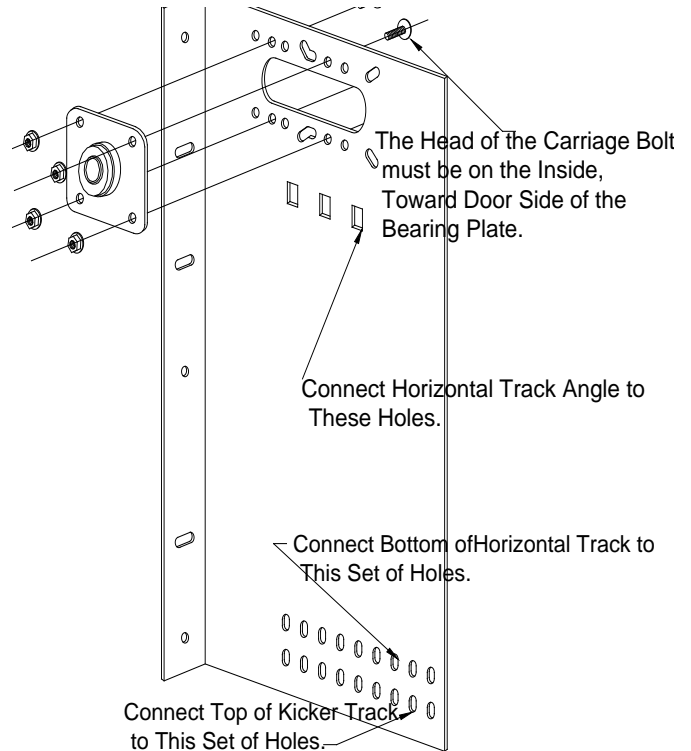
- Once the bearing plate and kicker track have been securely installed the horizontal track may be installed.
- Raise the horizontal track to the proper height and attach the radius end of the horizontal track to the upper set of slotted holes on the bottom of the hi-lift bearing plate with two ¼" track bolts in line with the kicker track that was previously installed. Do not tighten the track bolts at this time you may have to move these. Be sure the head of the track bolts are on the inside of the tracks.



- Attach the horizontal angle to the upper part of hi-lift bearing plate with one 3/8" x 3/4" carriage bolt. You may use any one of the three rectangle holes in the bearing plate to attach the horizontal angle, use the hole that makes the horizontal angle and track as level as possible. Install the back hang on the horizontal track being sure to keep the horizontal track square and level.
- After the Horizontal Angle and Bank hangs are installed make sure the bottom of your horizontal track and top of your kicker track is aligned and tighten your track bolts.
- Install the bumper springs by drilling two 25/64" holes, 1 1/2" apart near the end of the horizontal track, use 3/8" bolts.
- Install the shaft bearings in the high lift bearing plates using 4- 5/16" x 3/4" carriage bolts.

Note: Be sure to position the shaft bearing on the outside of the high lift bearing plate, and the head of the carriage bolts must be on the inside of the high lift bearing plate with the threads going out. (The high lift bearing plates come with several different positioning options for the bearing; these different positions are used for the different drum sizes. Use the drums provided to determine the correct position for the shaft bearing. The drum should be positioned as close to the wall as possible but not so close that it rubs.

- Once the shaft bearings, bearing plates, and tracks are securely installed you may continue with the rest of the installation. Refer to the standard installation instructions for details on how to install the rest of your door.



Detail of End Bearing Plate Assembly

