

Supplemental Instructions for Low Headroom Track with Extension Springs

These instructions are designed to work in conjunction with the regular instructions. Please read them before beginning the installation.

Low headroom double track is designed to reduce your headroom requirement to 4". If low headroom track was ordered with your door, all the necessary brackets are included in your hardware carton for low headroom installation.

Installation is similar to standard track except the cable is attached to the wrap around bottom corner bracket and rides on the outside of the track instead of the inside. See Figure 31.

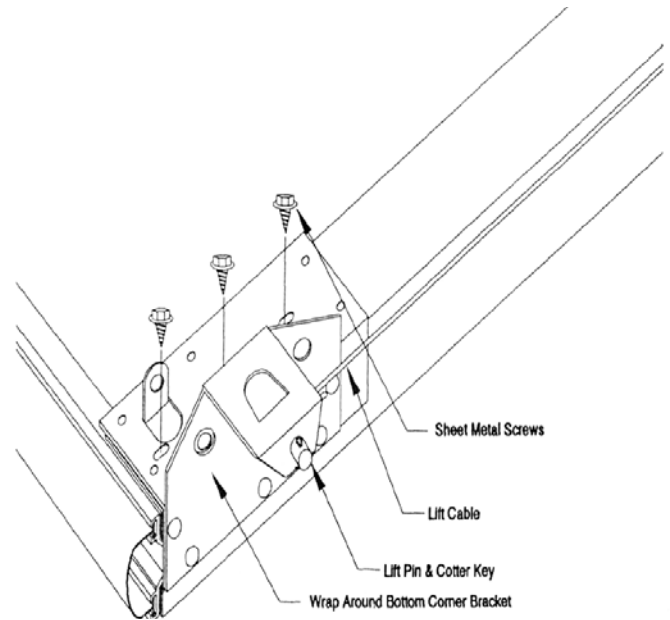


Figure 31

The top bracket is also different to allow the top section to follow in the top track. See figure 32

If your door requires a strut 12' wide or wider, on the top section, or you are using a strut for operator reinforcement, it must be installed over the top of the top corner bracket, using the slots in the top corner bracket. See figure 32a.

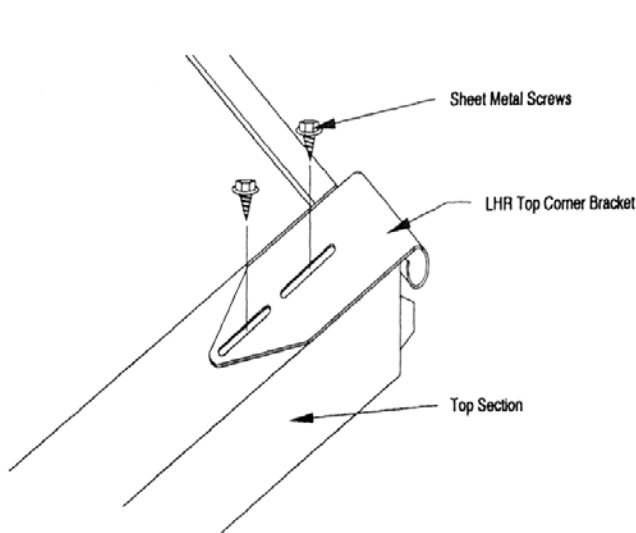


Figure 32

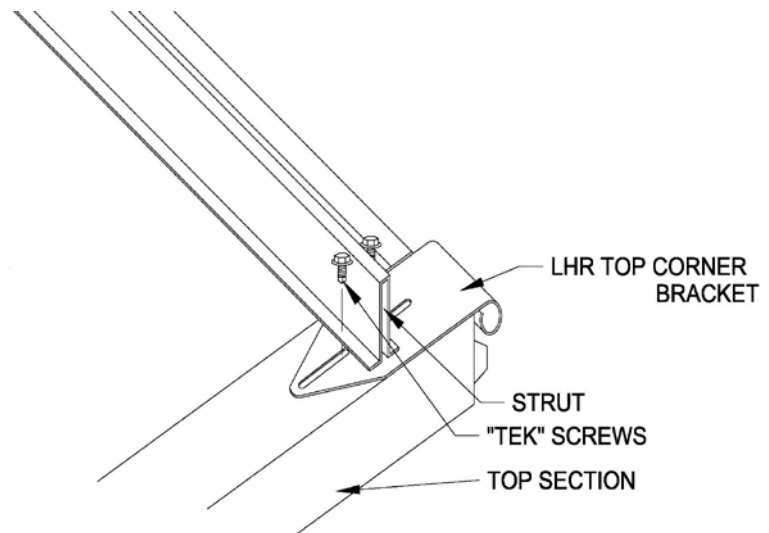


Figure 32a

Should the door not seal properly with the top corner brackets in this position, the bracket may be turned around and moved up or down on the door as needed to obtain a snug seal.

Installation of the track is basically the same as a standard installation except the vertical tracks are shorter, track junction plates are used instead of the horizontal angles, and there is a 2nd Horizontal track for the top roller only. See figure 33.

The position of the 4" sheave (pulley) is also changed. The 4" sheave (pulley) should be mounted approximately 9" back from the front of the track in the hole provided on the outside of the track junction plate with 3/8" x 1 1/2" bolt and nut. See figure 34.

Continue the installation as directed in the regular instructions.

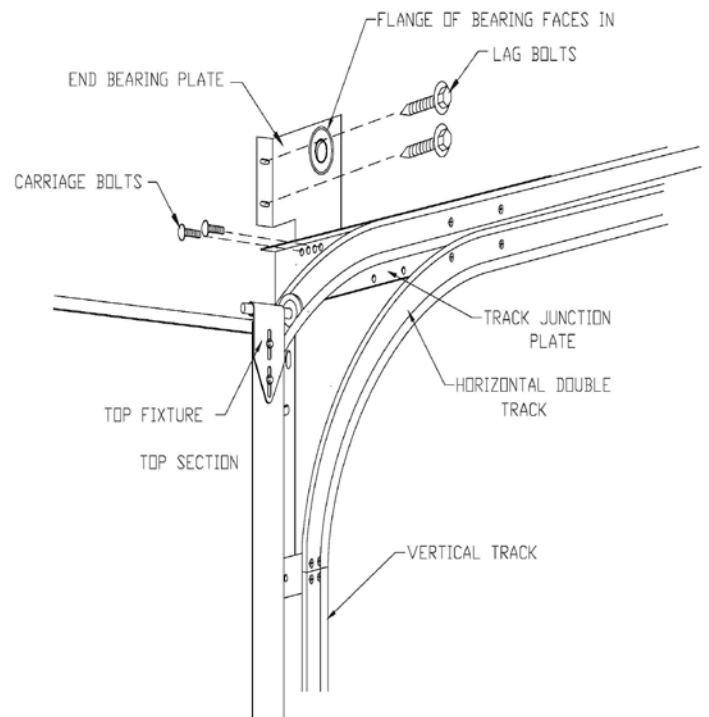


Figure 33

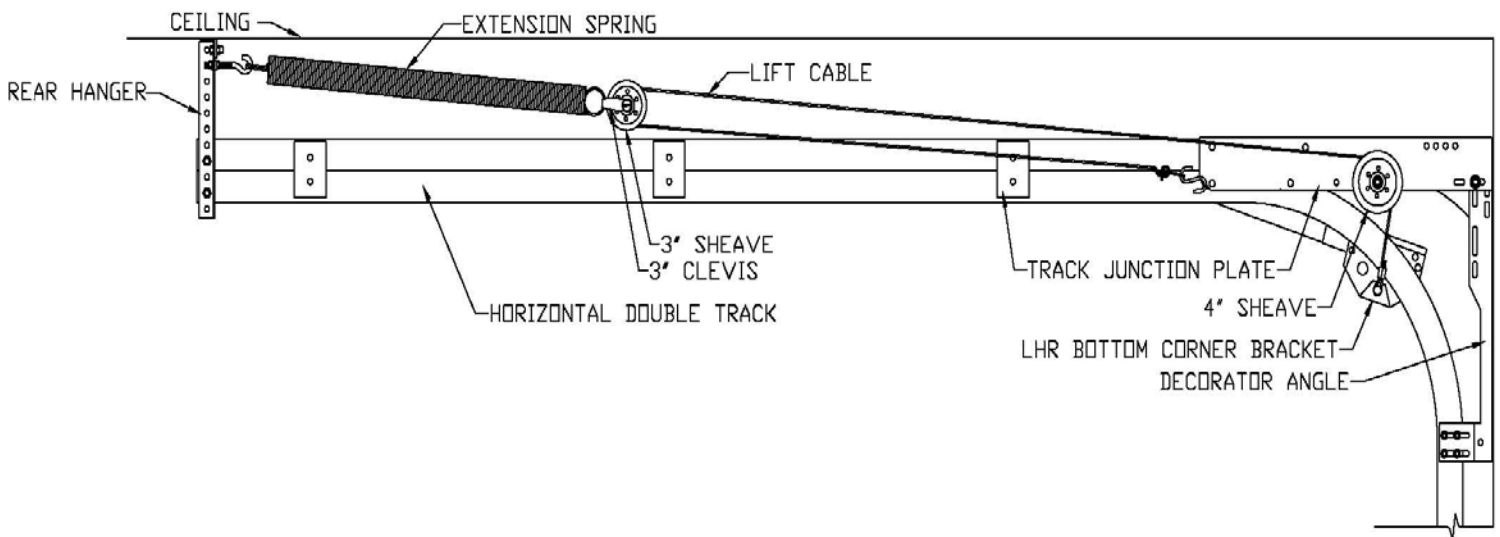


Figure 34