

Supplemental Instructions for Low Headroom Track with Front Mounted Torsion Springs **Minimum Headroom Requirement (12" commercial) and (9" residential)**

These instructions are designed to work in conjunction with the regular instructions. Please read them before beginning the installation.

You will notice the following differences from standard installation.

- The top corner brackets are different and are installed at the very top of the top section. See figure 48. **If your door requires a strut on the top section it must be installed over the top of the top bracket, using the holes in the top bracket. See figure 48A**
- The vertical tracks are shorter than standard installation.
- The horizontal tracks are comprised of two tracks, the top track is for the very top roller only and the lower track is for all the other rollers.
- Two spacers are used on the torsion shaft. See figure 49. These spacers are used to keep the drums and cable from rubbing on the horizontal track.

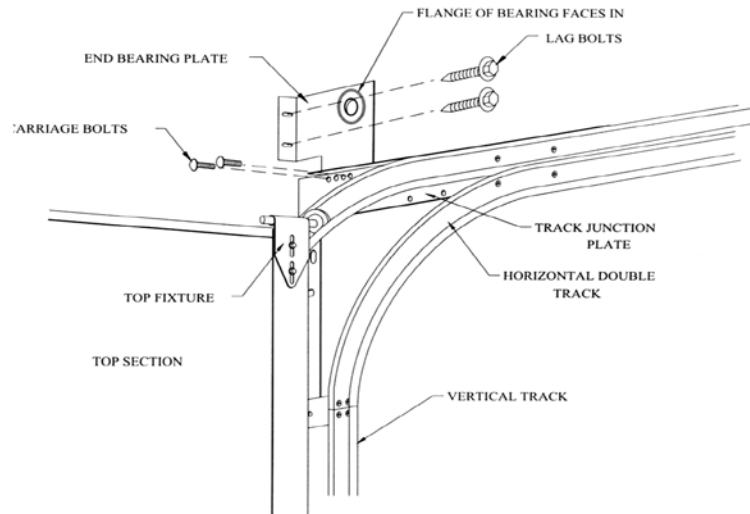


Figure 48

Where headroom permits, 12" minimum (commercial) 9" minimum (residential), the torsion assembly may be mounted over the top of the door similar to standard installation while still using low headroom double track.

After mounting the horizontal tracks, as explained in the standard instructions, fasten the end bearing plates to the track junction plate and to the wall. Both the end bearing plate to the track junction plate with 5/16" x 3/4" carriage bolts and lag the end bearing plate foot to the wall with the 5/16" x 1-5/8" lag bolts provided. See figure 48. Note: The flange on the bearing in the end bearing plate should face in toward the door. The diagram below shows the use of two spacers, which have been provided in the hardware carton, just outside the drums but inside the end bearing plates. These spacers will keep the cable drum and cable away from the horizontal track and allow for smoother operation just like standard lift doors. See figure 49.

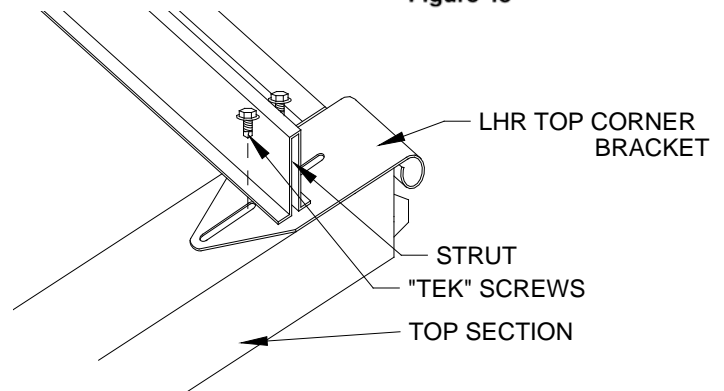


FIGURE 48A

Assemble the torsion shaft, springs, center bearing plate, drums and spacers as shown in figure 49. Go back to the standard instructions, install the torsion shaft assembly just as the standard instructions.

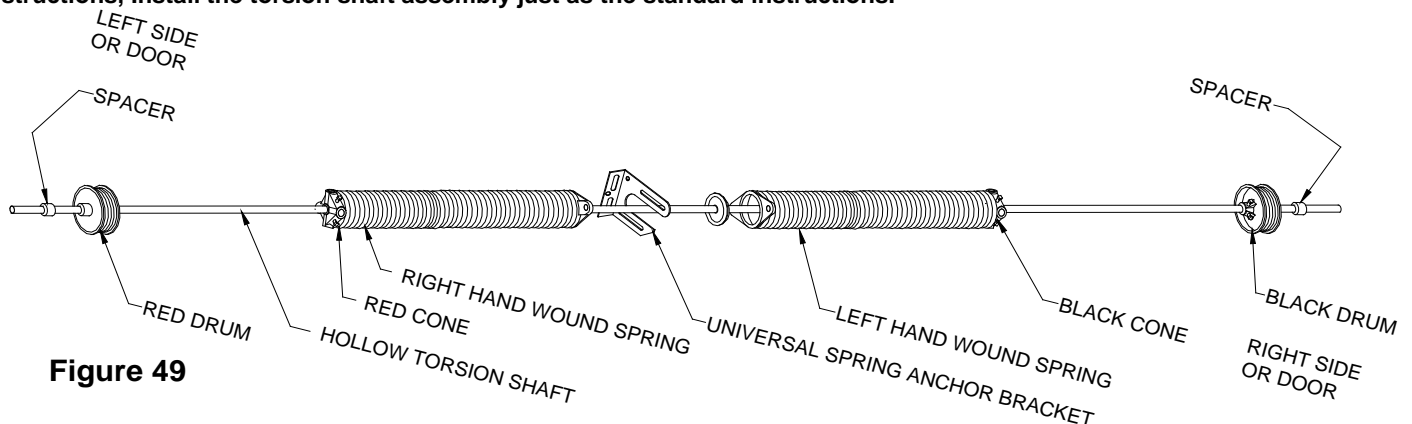


Figure 49