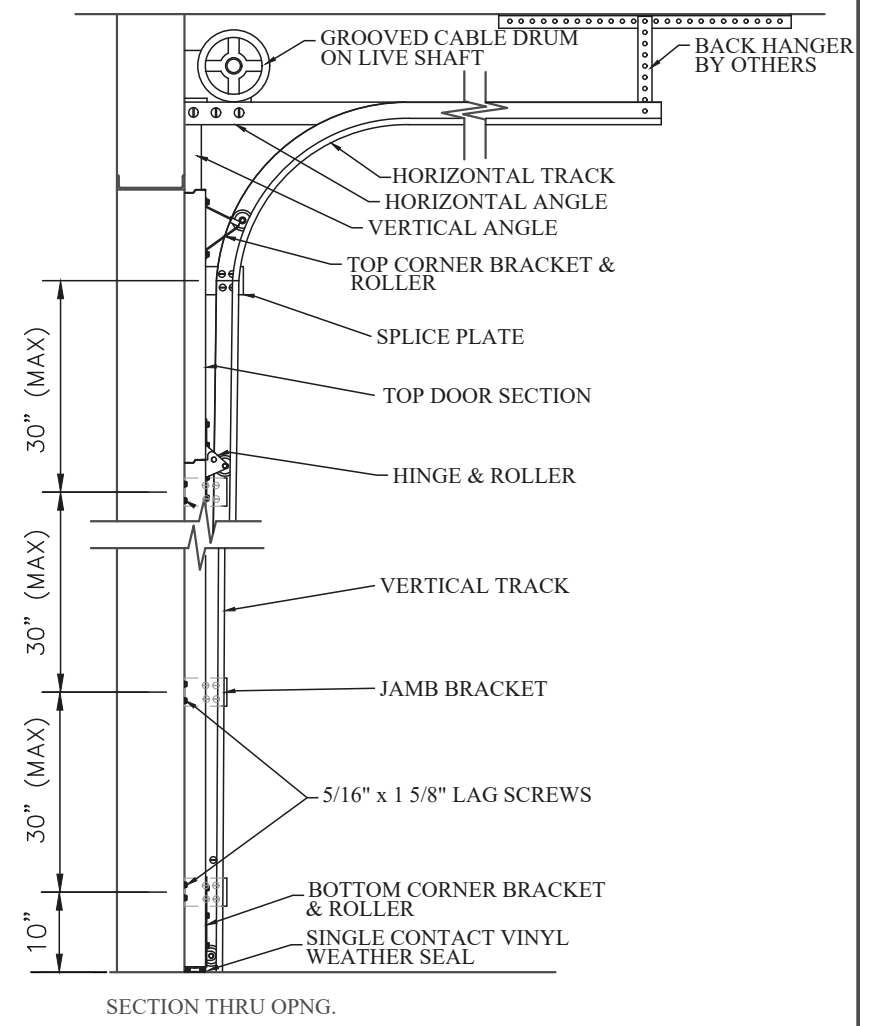
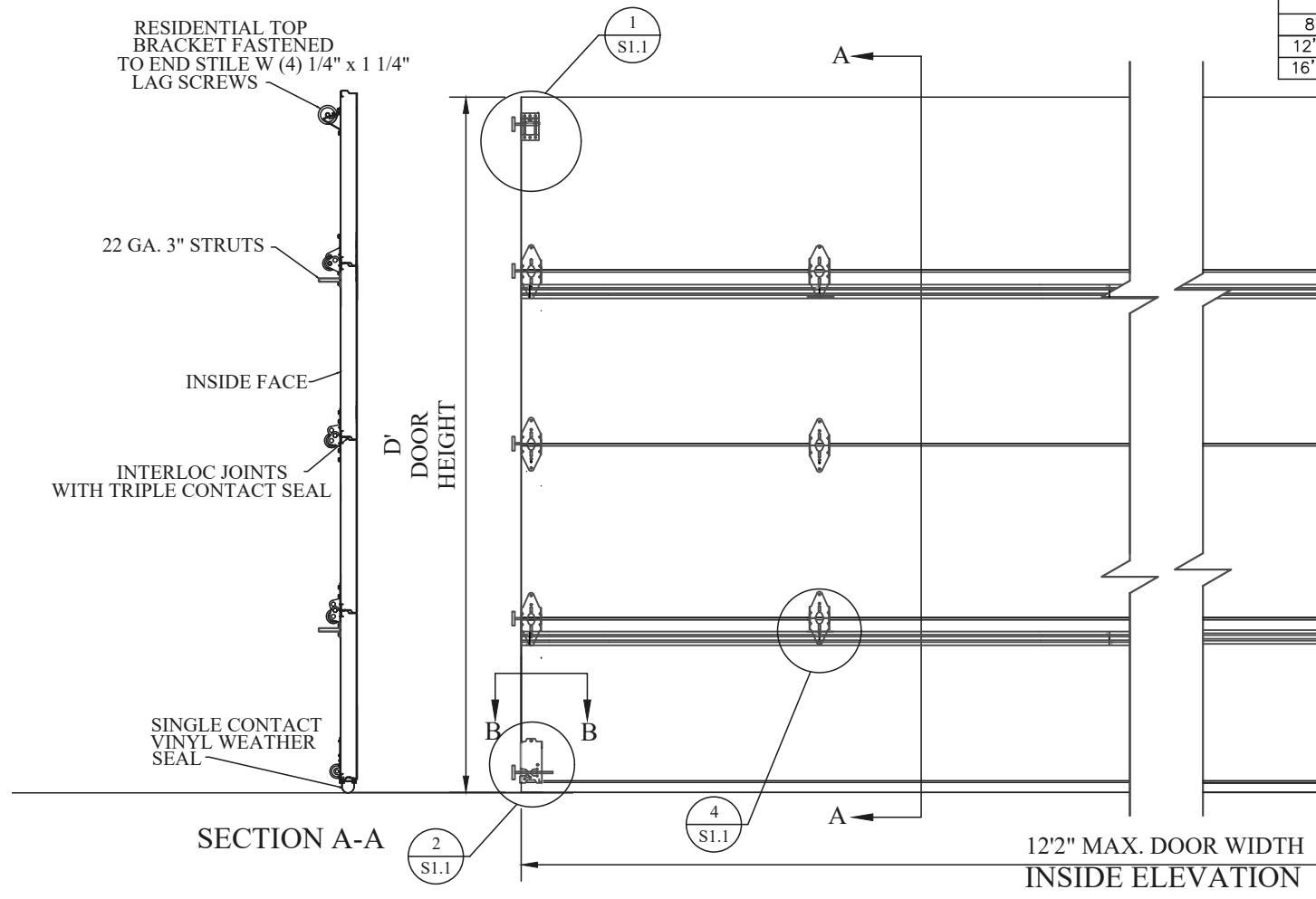
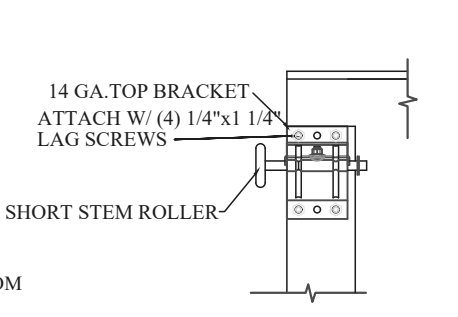


D	# OF STRUTS
6' to 8'	2 STRUTS
8'3" to 12'	3 STRUTS
12'3" to 16'	4 STRUTS
16'3" to 20'	5 STRUTS

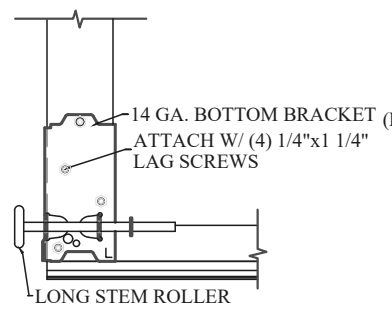
PLACE ONE STRUT ON BOTTOM SECTION.  
PLACE ADDITIONAL STRUTS ON EVERY OTHER DOOR SECT  
DO NOT EXCEED A SPACING OF 48"



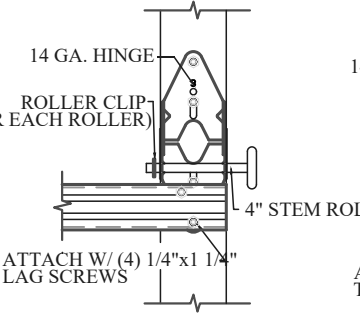
**NOTES:**  
 \* DOORS & HARDWARE WILL BE DESIGNED & MANUFACTURED & INSTALLED ACCORDING TO STANDARDS ESTABLISHED BY THE DOOR ACCESS SYSTEMS MANUFACTURING ASSOCIATION (DASMA).  
 \* AN INSIDE SLIDE LOCK SHOULD BE MOUNTED ON END STILE APPROXIMATELY 31" FROM BOTTOM OF DOOR ON THE INTERIOR LEFT.



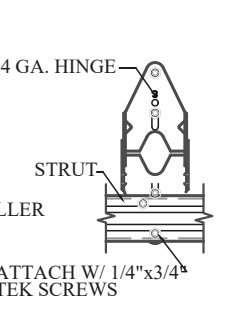
TOP BRACKET DETAIL  
DETAIL 1/S1.1



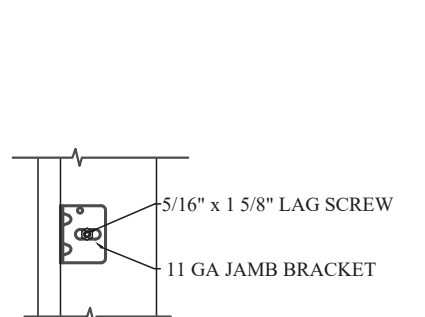
BOTTOM BRACKET DETAIL  
DETAIL 2/S1.1



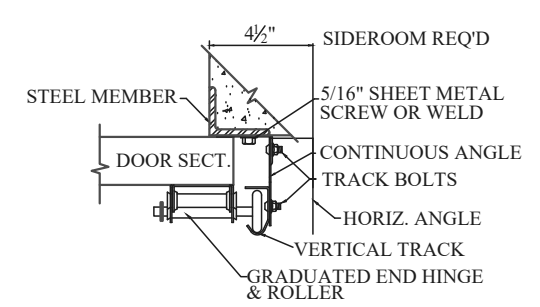
END HINGE DETAIL  
DETAIL 3/S1.1



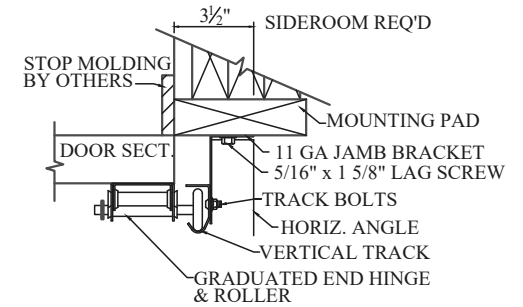
STRUT DETAIL  
DETAIL 4/S1.1



JAMB BRACKET DETAIL  
DETAIL 5/S1.1



STEEL JAMB DETAIL (TYPICAL)  
SECTION 'B-B'



WOOD JAMB DETAIL (TYPICAL)  
SECTION 'B-B'

MODELS: Acadia 138, G-5138  
 Raised Panel 21"x13", 40"x13", 18 3/4"x15", Flush, Grooves, Overlay  
 DESIGN PRESSURE +13.5/-14.9 PSF  
 TEST PRESSURE +20.3/-22.4 PSF  
 TESTED PER THE APPLICABLE REQUIREMENTS OF:  
 ASTM: E 330 ANSI/DASMA 108-2005

NOTE: THE DESIGN OF SUPPORTING STRUCTURAL ELEMENTS SHALL BE THE RESPONSIBILITY OF THE PROFESSIONAL OF RECORD FOR THE BUILDING OR STRUCTURE IN ACCORDANCE WITH CURRENT BUILDING CODES

		<b>ENGINEERING DRAWING</b>	
		<b>TITLE</b> <b>12'2" MAX. WIDTH, WIND LOAD RATED DOOR</b>	
<b>MODEL</b> GARAGA 1 3/8" POLYURETHANE INJECTED	<b>SCALE</b> - N/A	<b>REV. NO.</b> 0	<b>SHEET</b> OF
<b>DATE</b>		<b>DATE</b>	