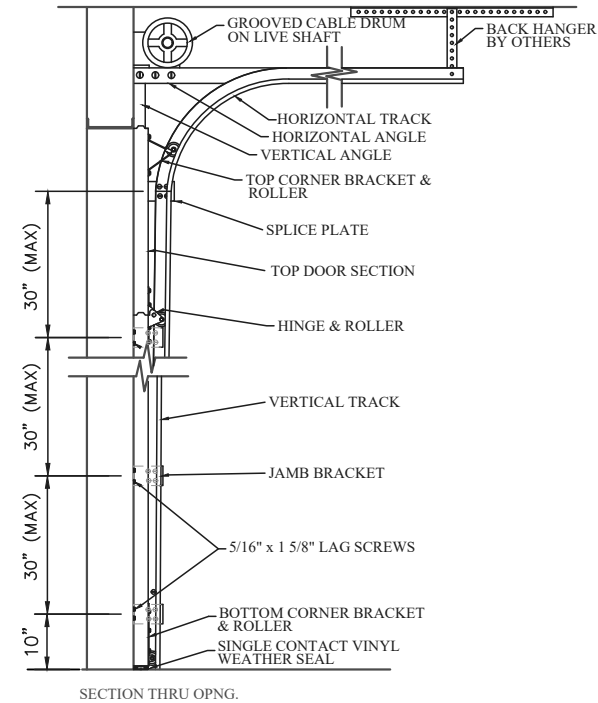


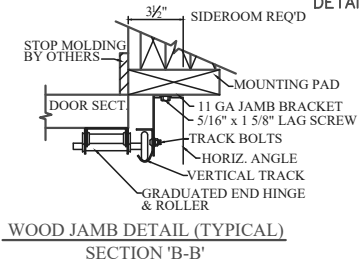
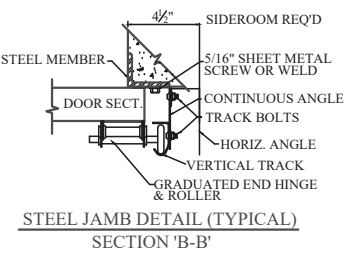
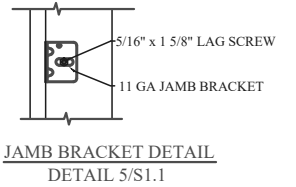
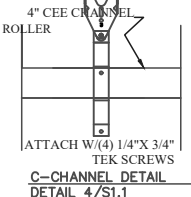
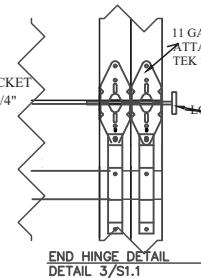
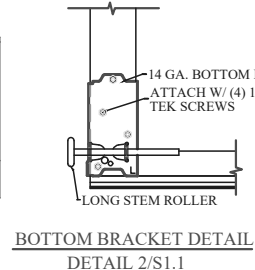
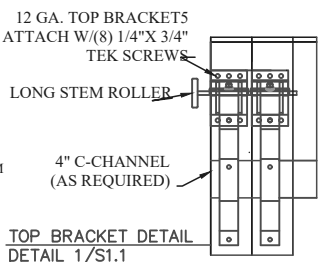
D	# OF STRUTS
6'	3 C-CHANNEL
7' to 8'	4 C-CHANNEL
8'3\" to 10'	5 C-CHANNEL
10'3\" to 12'	6 C-CHANNEL
12'3\" to 14'	7 C-CHANNEL
14'3\" to 16'	8 C-CHANNEL
16'3\" to 18'	9 C-CHANNEL
18'3\" to 20'	10 C-CHANNEL

PLACE ONE 4\"/>



NOTES:

- * DOORS & HARDWARE WILL BE DESIGNED & MANUFACTURED & INSTALLED ACCORDING TO STANDARDS ESTABLISHED BY THE DOOR ACCESS SYSTEMS MANUFACTURING ASSOCIATION (DASMA).
- * IN DOOR SECTIONS WHERE WINDOW LITES ARE INSTALLED, STRUTS MAY BE RELOCATED OVER HINGE LEAFS TO AVOID OBSTRUCTION.
- * AN INSIDE SLIDE LOCK SHOULD BE MOUNTED ON END STILE APPROXIMATELY 31\"/>



MODELS: TAS III

DESIGN PRESSURE +12.4/-13.8 PSF
 TEST PRESSURE +18.6/-20.7 PSF

TESTED PER THE APPLICABLE REQUIREMENTS OF:
 ASTM: E 330 ANSI/DASMA 108-2002

NOTE: THE DESIGN OF SUPPORTING STRUCTURAL ELEMENTS SHALL BE THE RESPONSIBILITY OF THE PROFESSIONAL OF RECORD FOR THE BUILDING OR STRUCTURE IN ACCORDANCE WITH CURRENT BUILDING CODES

		ENGINEERING DRAWING	
		BEMIDJ, MN 56601	
TITLE			
30'-2\"/> 			
MODEL #	TAS III	REV. NO.	0
SCALE	N/A	SHEET	OF
		DATE	