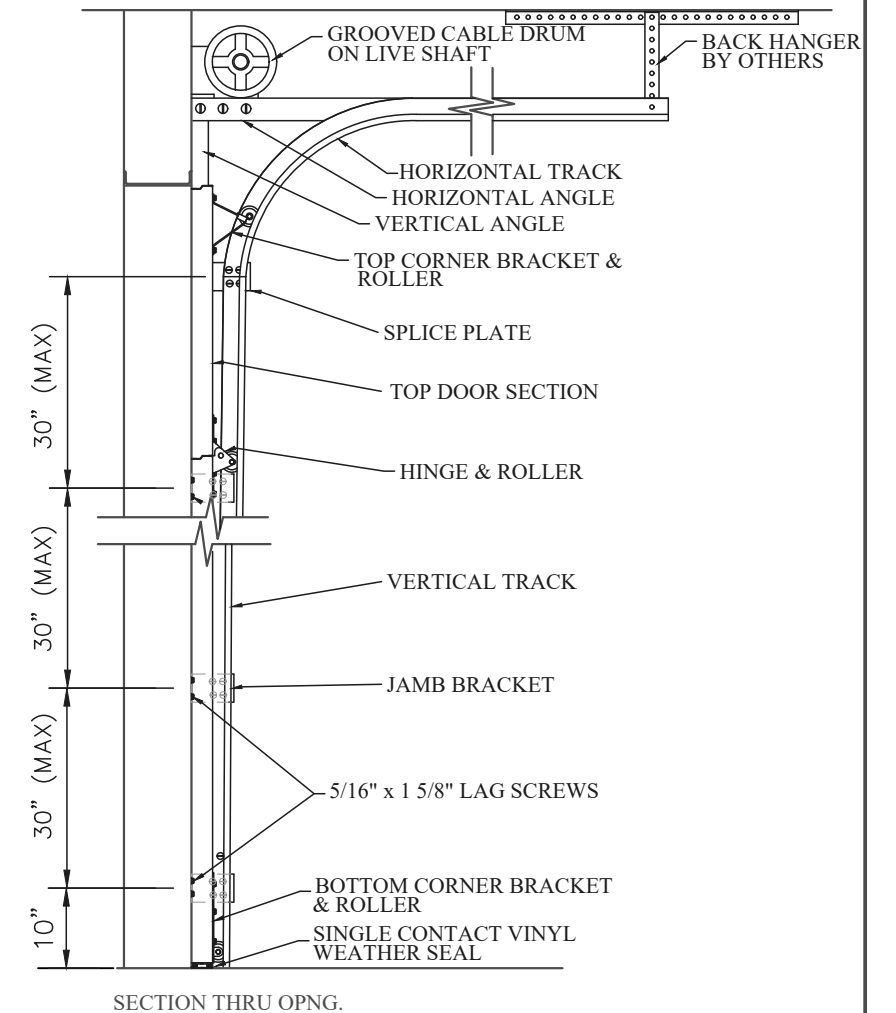
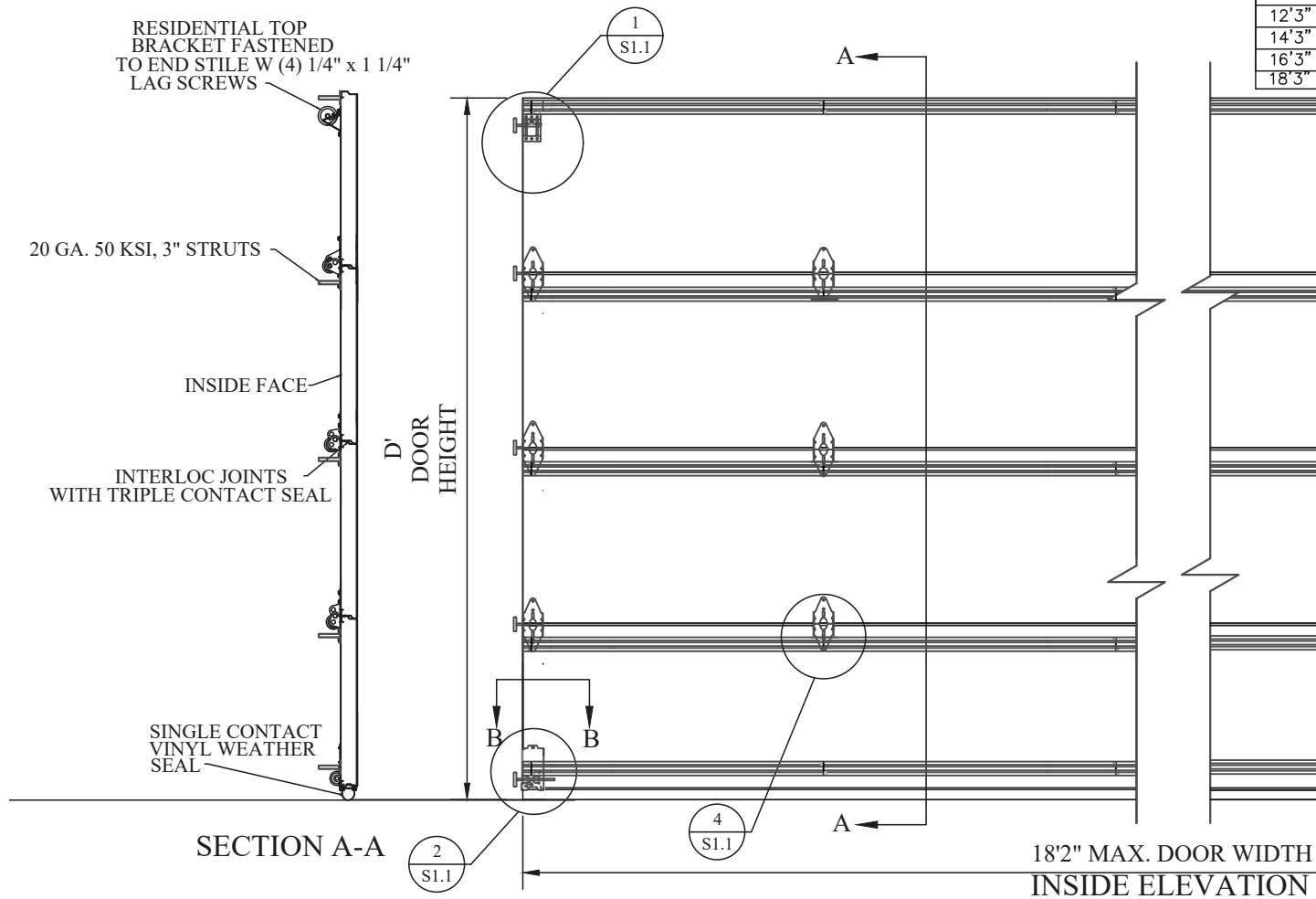


| D            | # OF STRUTS |
|--------------|-------------|
| 6' to 8'     | 5 STRUTS    |
| 8'3" to 10'  | 6 STRUTS    |
| 10'3" to 12' | 7 STRUTS    |
| 12'3" to 14' | 8 STRUTS    |
| 14'3" to 16' | 9 STRUTS    |
| 16'3" to 18' | 10 STRUTS   |
| 18'3" to 20' | 11 STRUTS   |

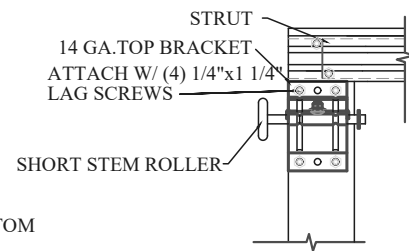
PLACE TWO STRUTS ON BOTTOM SECTION  
PLACE ONE STRUT ON ALL OTHER SECTIONS



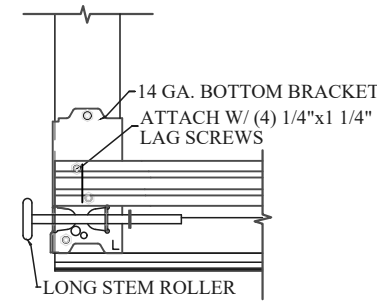
**NOTES:**

\* DOORS & HARDWARE WILL BE DESIGNED & MANUFACTURED & INSTALLED ACCORDING TO STANDARDS ESTABLISHED BY THE DOOR ACCESS SYSTEMS MANUFACTURING ASSOCIATION (DASMA).

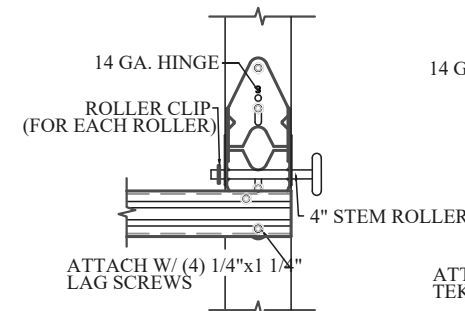
\* AN INSIDE SLIDE LOCK SHOULD BE MOUNTED ON END STILE APPROXIMATELY 31" FROM BOTTOM OF DOOR ON THE INTERIOR LEFT.



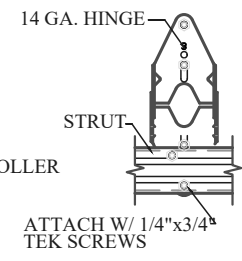
TOP BRACKET DETAIL  
DETAIL 1/S1.1



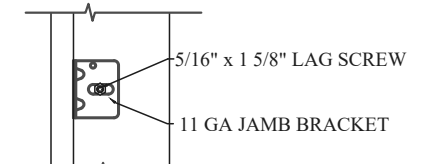
BOTTOM BRACKET DETAIL  
DETAIL 2/S1.1



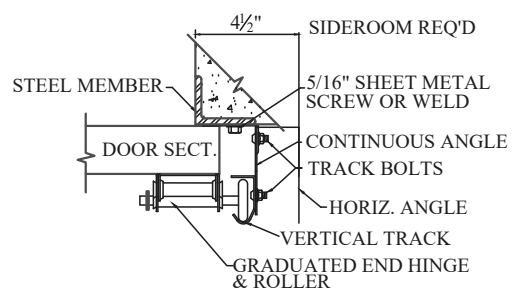
END HINGE DETAIL  
DETAIL 3/S1.1



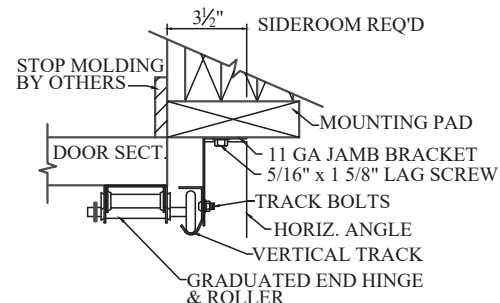
STRUT DETAIL  
DETAIL 4/S1.1



JAMB BRACKET DETAIL  
DETAIL 5/S1.1



STEEL JAMB DETAIL (TYPICAL)  
SECTION 'B-B'



WOOD JAMB DETAIL (TYPICAL)  
SECTION 'B-B'

MODELS: Standard+, G-5000, Top Tec  
Raised Panel 21"x13", 40"x13", 18 3/4"x15", Flush, Grooves, Overlay

DESIGN PRESSURE +17.8/-18.6 PSF  
TEST PRESSURE +26.7/-27.9 PSF  
TESTED PER THE APPLICABLE REQUIREMENTS OF:  
ASTM: E 330 ANSI/DASMA 108-2005

NOTE: THE DESIGN OF SUPPORTING STRUCTURAL ELEMENTS SHALL BE THE RESPONSIBILITY OF THE PROFESSIONAL OF RECORD FOR THE BUILDING OR STRUCTURE IN ACCORDANCE WITH CURRENT BUILDING CODES



BEMIDJI, MN 56601

ENGINEERING DRAWING



|       |                                     |  |    |
|-------|-------------------------------------|--|----|
| TITLE |                                     | 18'2" MAX. WIDTH, WIND LOAD RATED DOOR |    |
| MODEL | GARAGA 1 3/4" POLYURETHANE INJECTED | REV. NO.                               | 1  |
| SCALE | N/A                                 | SHEET                                  | OF |
|       |                                     | DATE                                   |    |